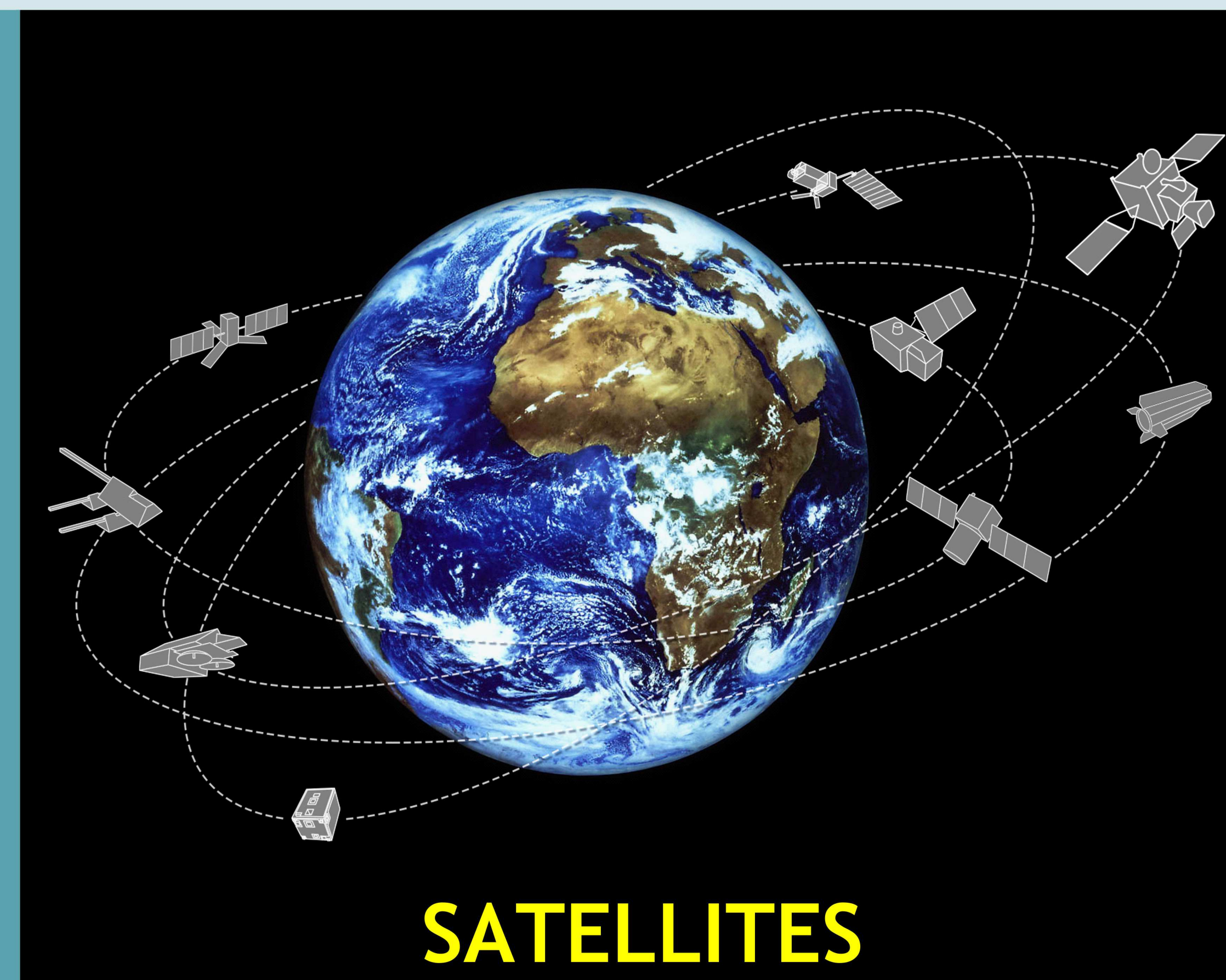
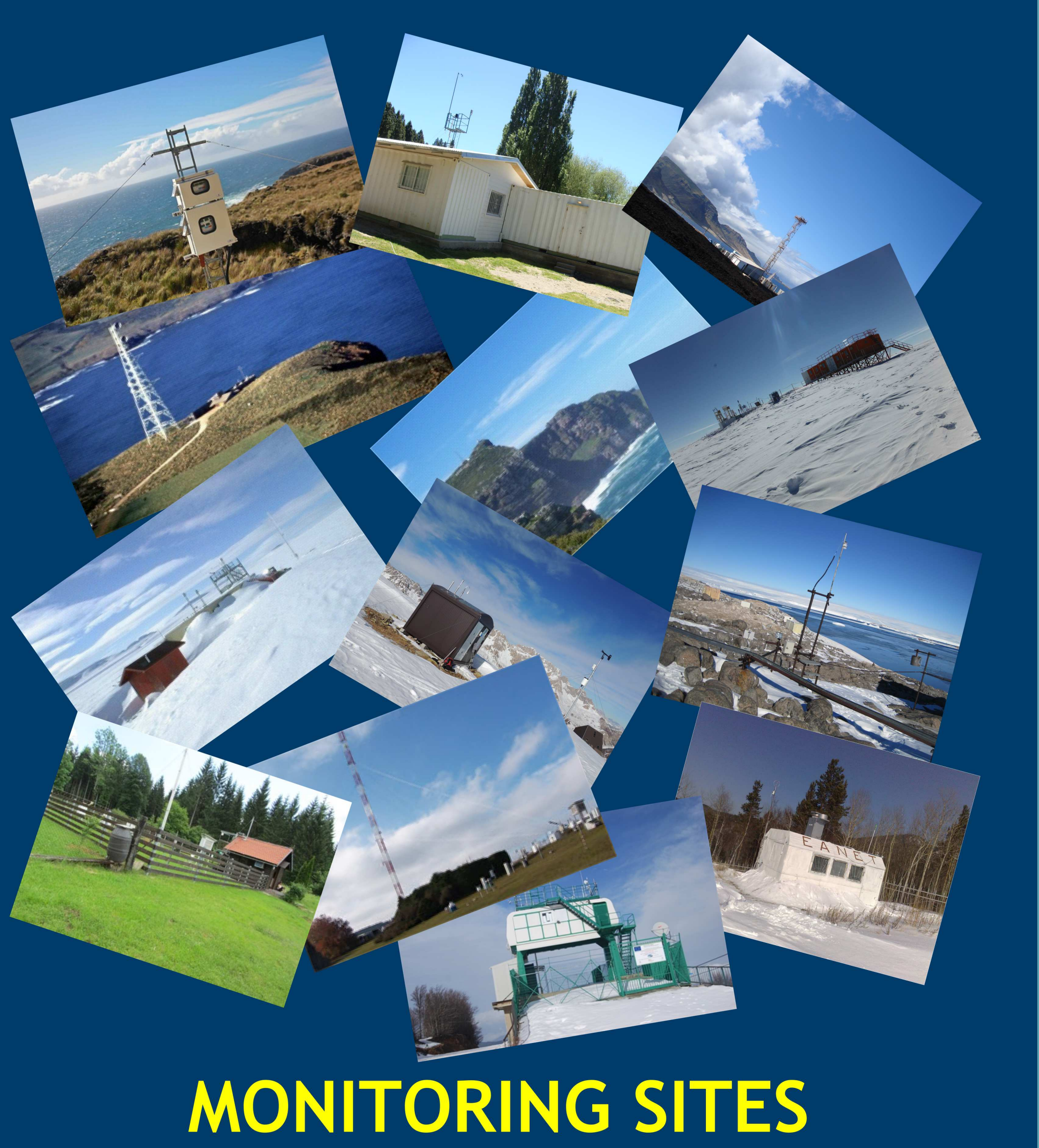


### What is GOS<sup>4</sup>M?

The Global Observation System for Mercury (GOS<sup>4</sup>M) is a GEO Flagship aimed to provide an infrastructure for knowledge generation to support the Minamata Convention on Mercury and the United Nations 2030 Agenda for Sustainable Development (SD).



**SATELLITES**



**MONITORING SITES**

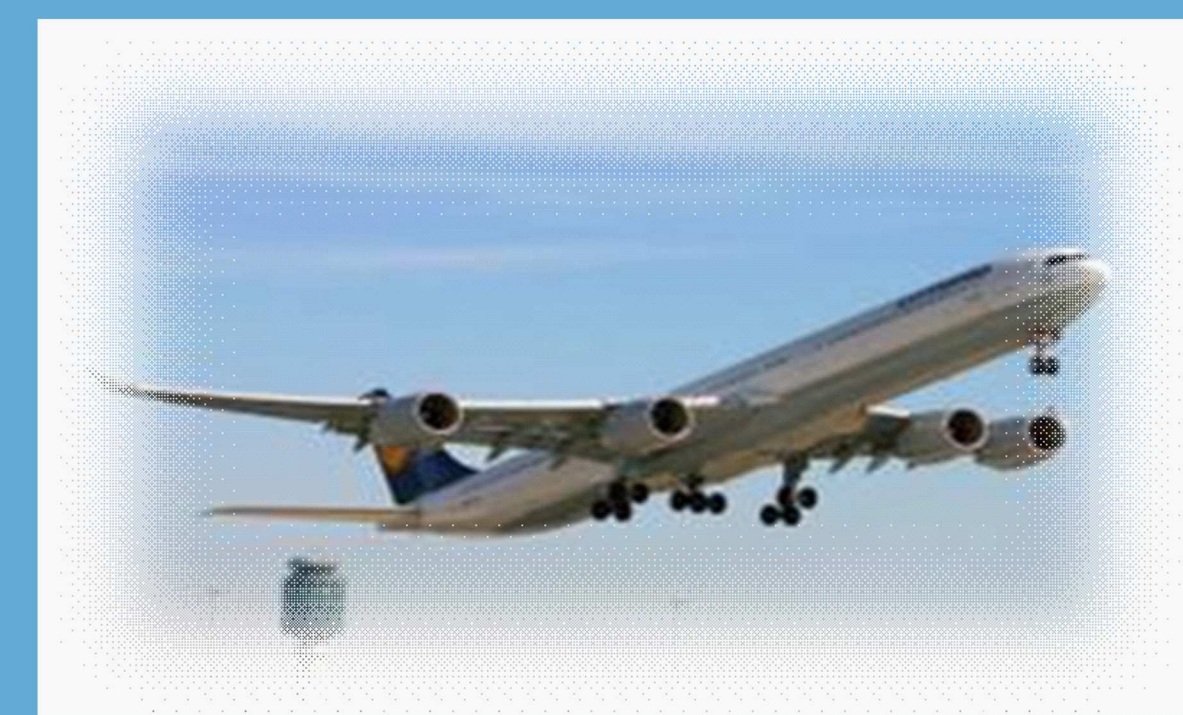
### Aim

GOS<sup>4</sup>M specifically aims to:

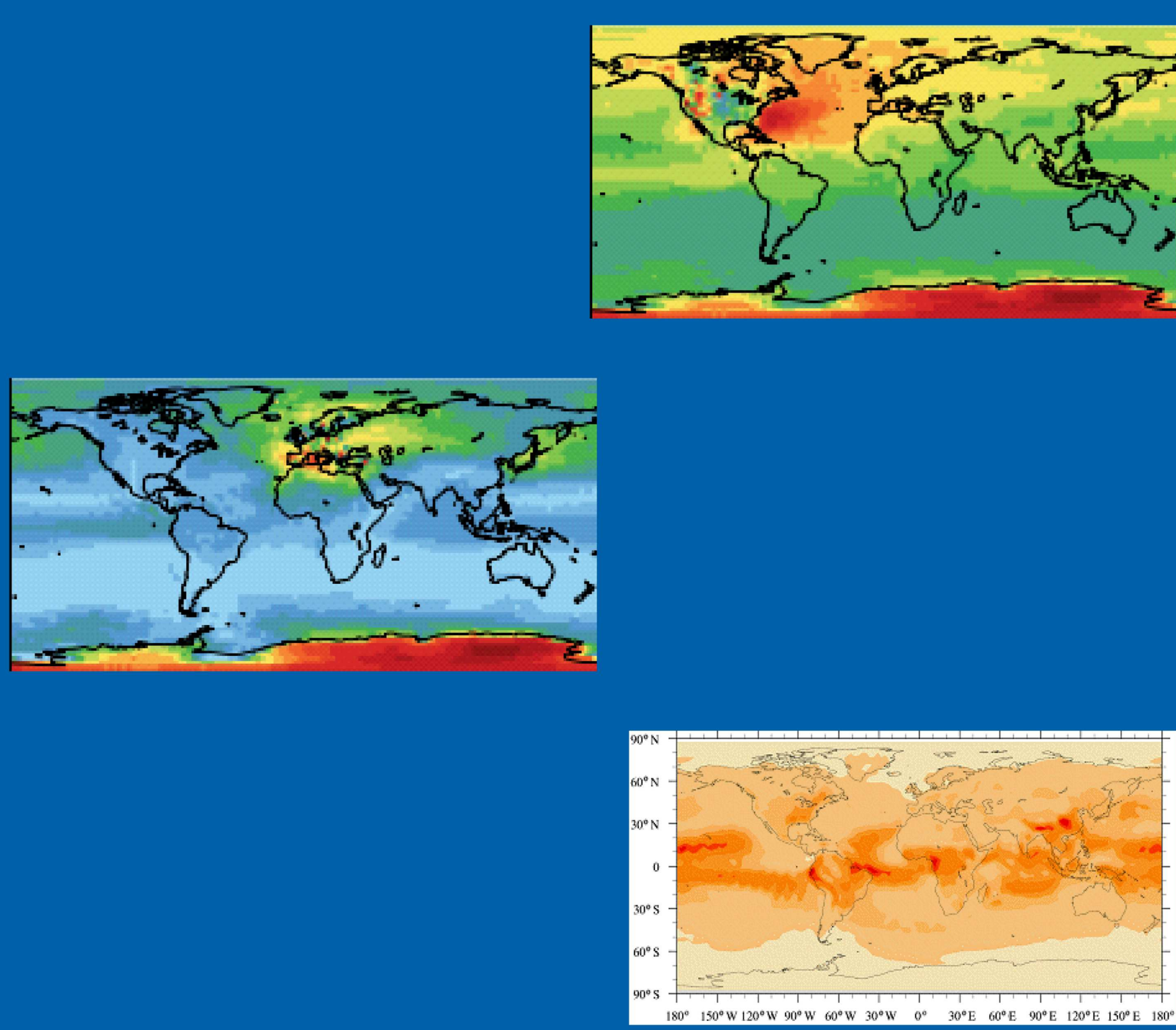
- Increase the availability and quality of observation data and information
- Federate on-going national & regional networks
- Harmonize Standard Operative Procedures for data & metadata production, archiving and sharing
- Contribute to the GEO Knowledge Hub to support Countries in the implementation of the Convention and assist interested parties in achieving the targets of UN 2030 Agenda for SD

### What does it offer?

- High-quality and comparable data of mercury concentrations and fluxes in air, ocean and terrestrial ecosystems
- Validated models to assess the fate of mercury in air and oceans
- A fully integrated Knowledge Hub for assessing the effectiveness of policy measures



**MONITORING CAMPAIGNS**



**MODEL OUTPUTS**

### Outcomes

A Knowledge Hub to support decision-makers in the assessment of the effectiveness of measures by co-designing different policy scenarios at national or regional levels.

The Knowledge Hub will permit the assessment of mercury fate, from sources to receptors, and estimate of costs associated with policies.



### The GOS<sup>4</sup>M Knowledge Hub

The GOS<sup>4</sup>M Knowledge Hub as a part of the GEO Knowledge Hub integrates high-quality observational data, model outputs and digital tools to co-design policy scenarios and support policy makers in selecting cost-effective strategies that would allow a Nation or a Region to achieve the target(s) of environmental legislation.

The Minamata Convention and the UN 2030 Agenda are the primary legal frameworks that the GOS<sup>4</sup>M Knowledge Hub is designed to respond to.

The Knowledge Hub is based on five knowledge pillars:

