

# **EIRENE RI:** Research Infrastructure for **EnvIR**onmental **E**xposure assessment**Nt** in **E**urope

Jana Klánová  
Masaryk University, RECETOX  
[Jana.klanova@recetox.muni.cz](mailto:Jana.klanova@recetox.muni.cz)

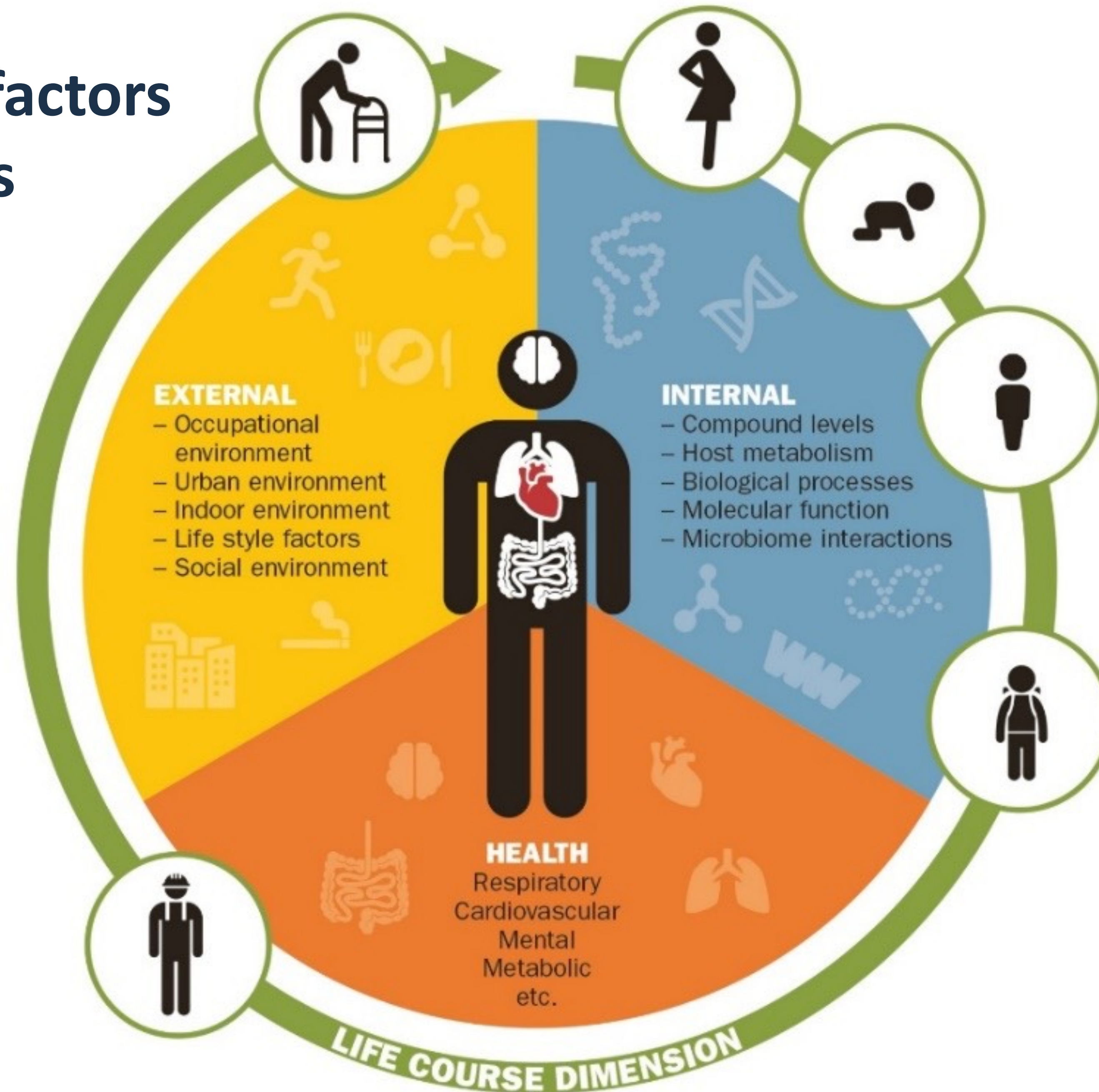




# EXPOSOME:

## Internal and external factors

### Life course dimensions





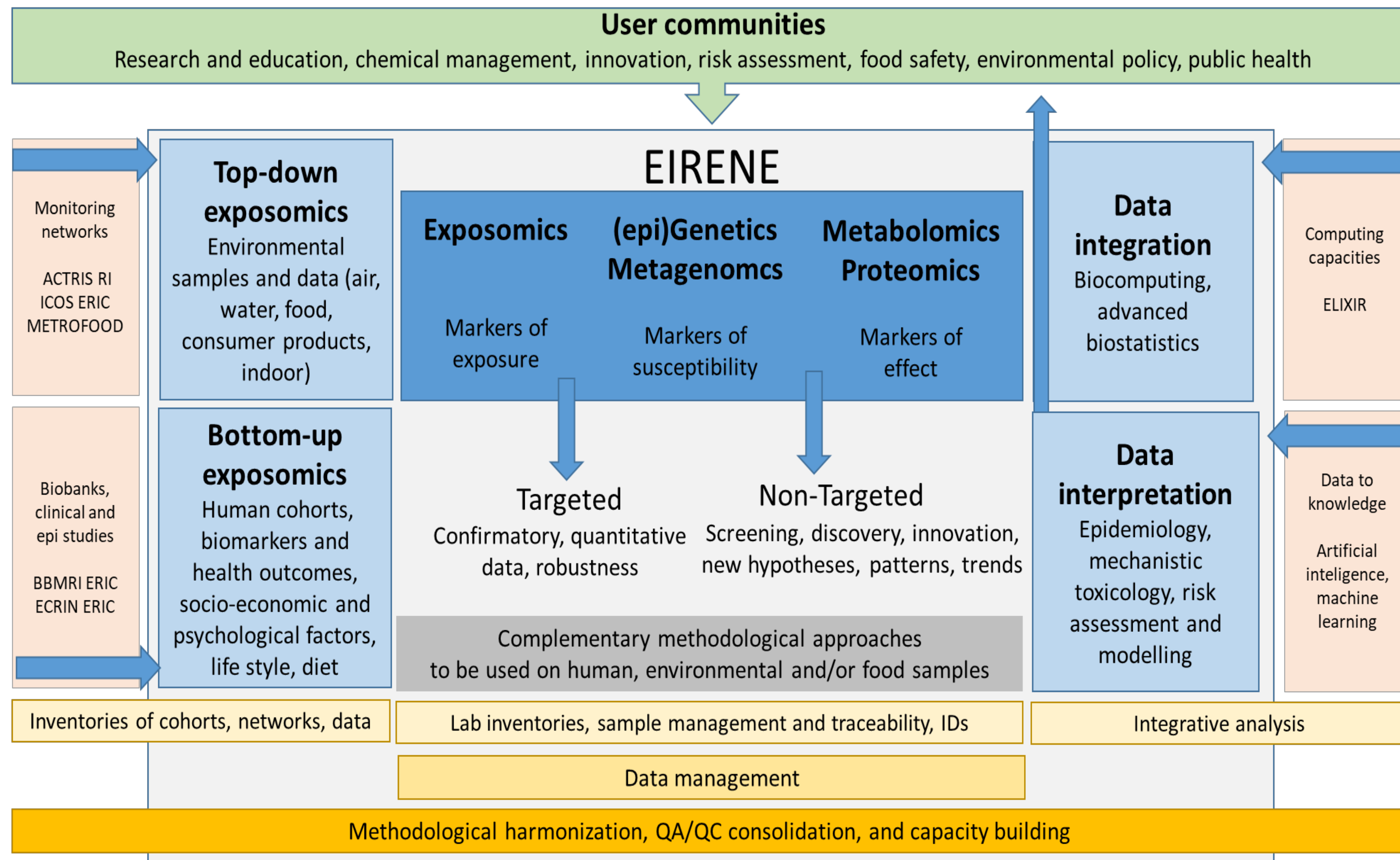
# A gap identified in the Health&Food domain of 2018 ESFRI Roadmap

„There is a need to enable a research infrastructure that will facilitate research on the human health and wellbeing at all stages in development, including ageing, nutrition and behavioural studies, and their connections to the social sciences and humanities. There are **geographic, economic and environmental drivers affecting human health and wellbeing. Climate change, extreme weather, dramatic changes in ecosystem services, environmental pollution and exposure to harmful chemicals** represent a new combination of issues that **require an integrated approach at pan-European level.**

At the heart of this approach is the EXPOSOME, taking **a holistic view throughout the human lifetime on the effect of exposures to diet, lifestyle, and the environment on human health and disease.** The EXPOSOME coupled with advanced genetic and medical approaches represents an opportunity to tackle this complex issue by connecting to the landscape of Health & Food RIs and other domains. Ongoing EU projects and networks on human biomonitoring (HBM4EU and EMEP) are important steps to bring together relevant parties.”

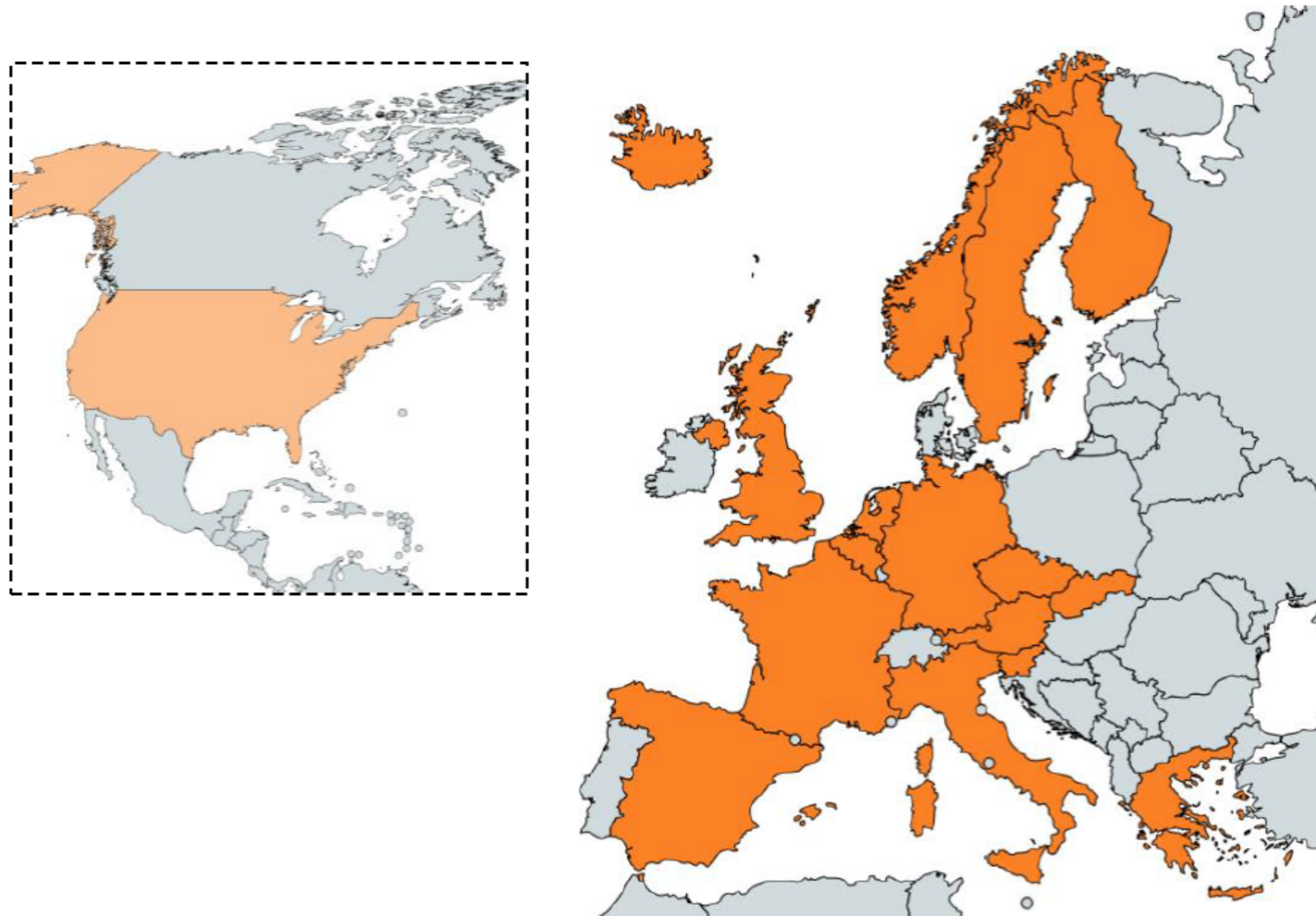


# EIRENE RI



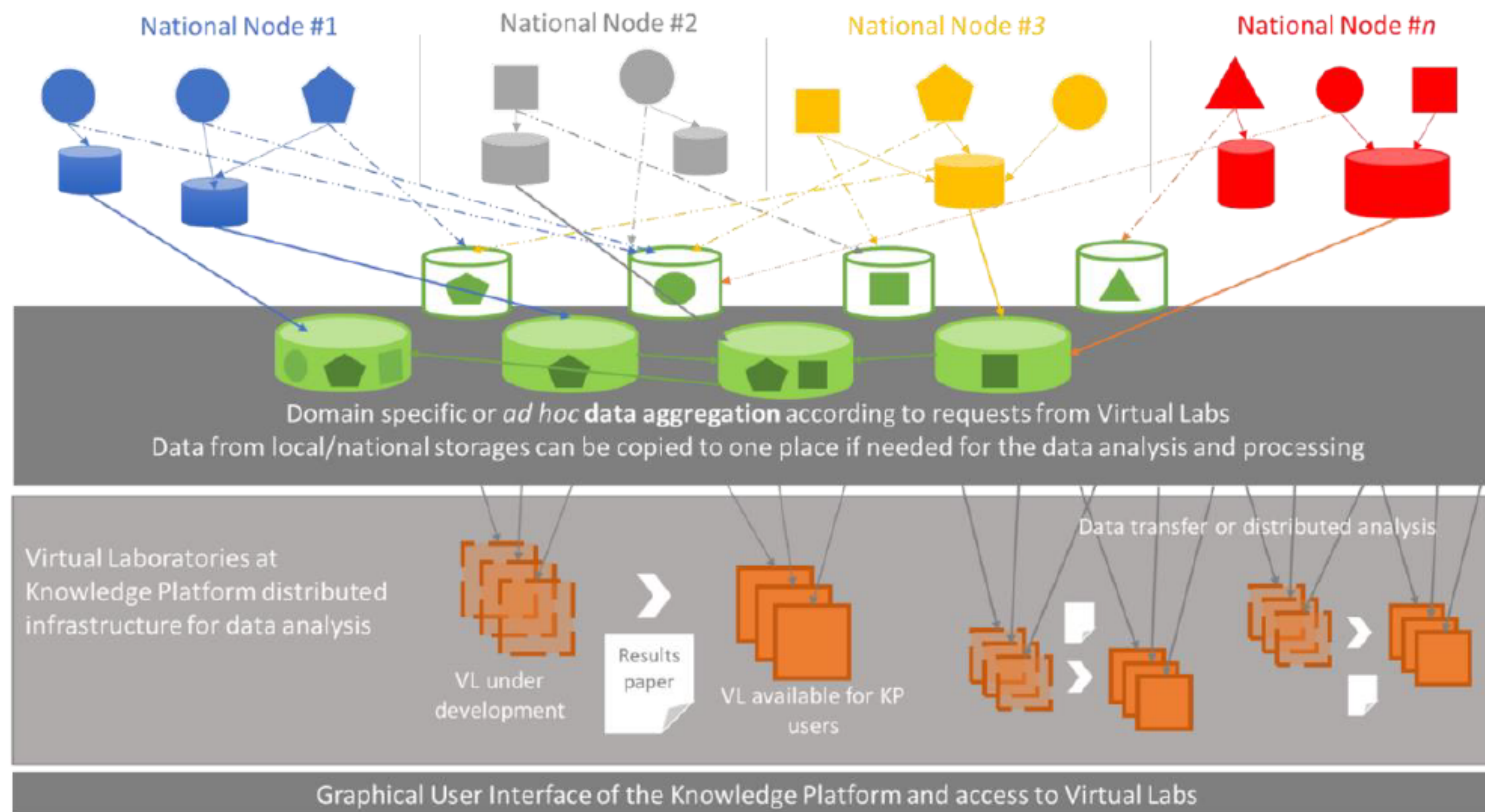


# Geographical coverage





# Layers of exposome data, Knowledge platform and Virtual Labs





# Thank you for your attention